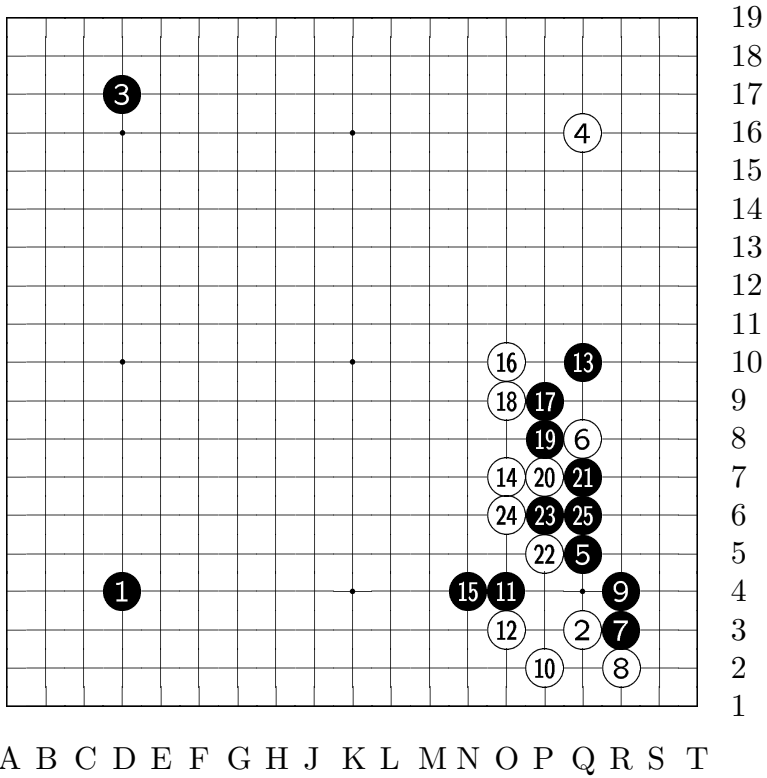


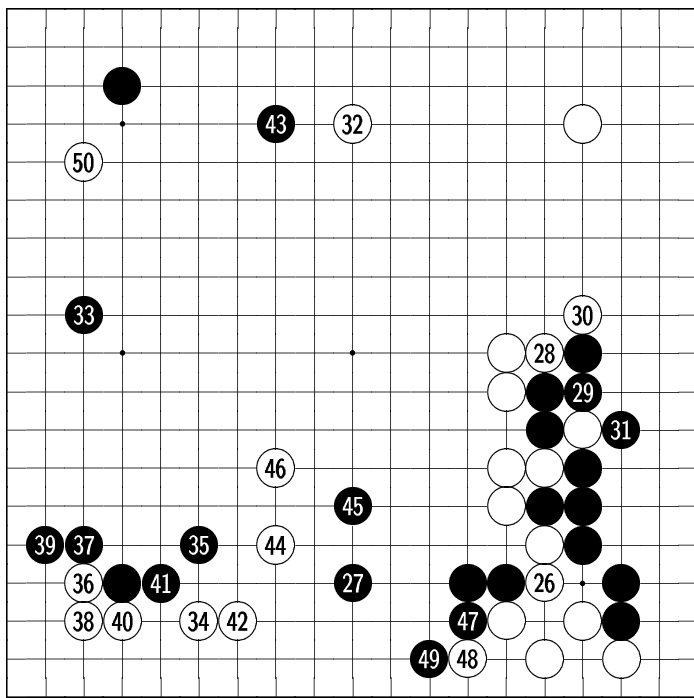
**White:** Marcel Paul Cavallier 1k

**Black:** Philippe Groelly 3k

**Komi:** 7.5



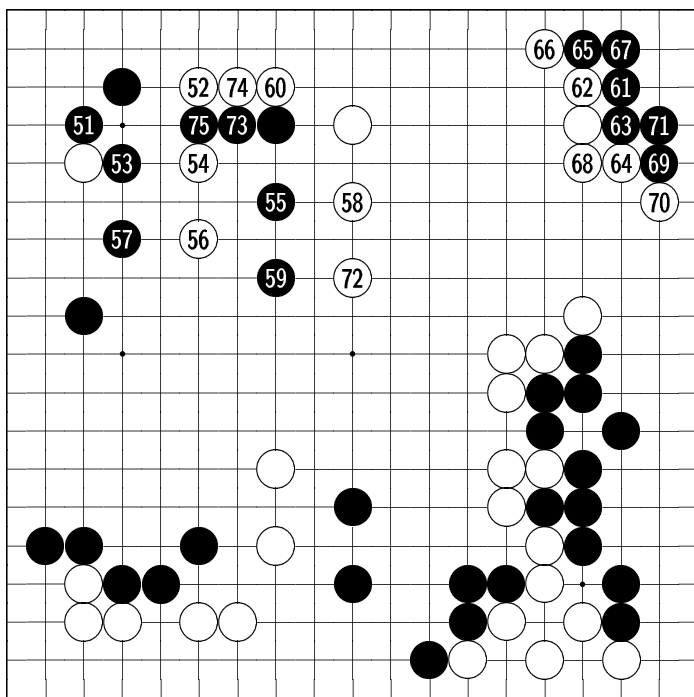
**Diagram 1:** 1-25



19  
18  
17  
16  
15  
14  
13  
12  
11  
10  
9  
8  
7  
6  
5  
4  
3  
2  
1

Diagram 2: 26-50

A B C D E F G H J K L M N O P Q R S T



19  
18  
17  
16  
15  
14  
13  
12  
11  
10  
9  
8  
7  
6  
5  
4  
3  
2  
1

Diagram 3: 51-75

A B C D E F G H J K L M N O P Q R S T

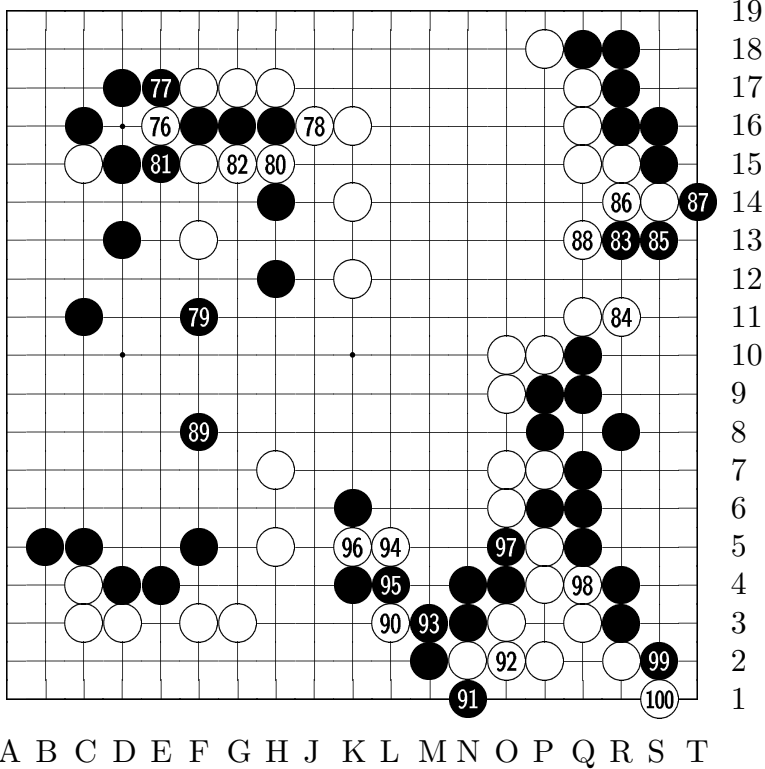


Diagram 4: 76-100

79: 79!!! en g14!!

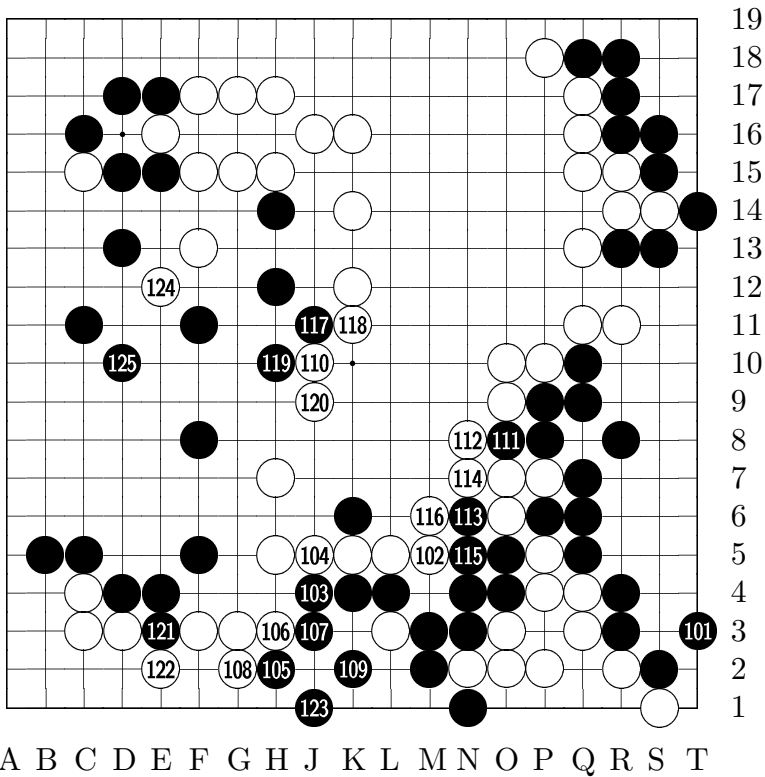
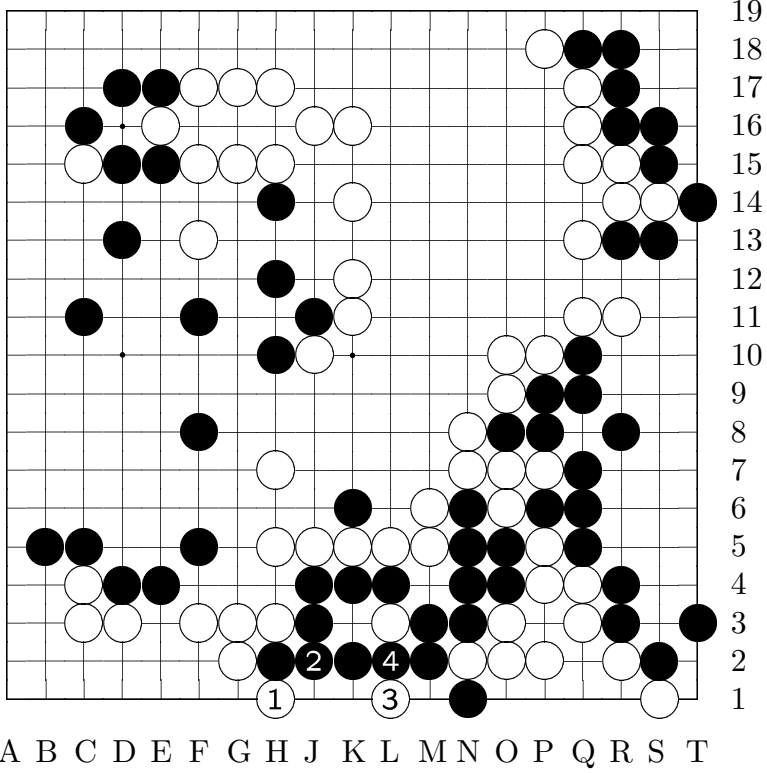
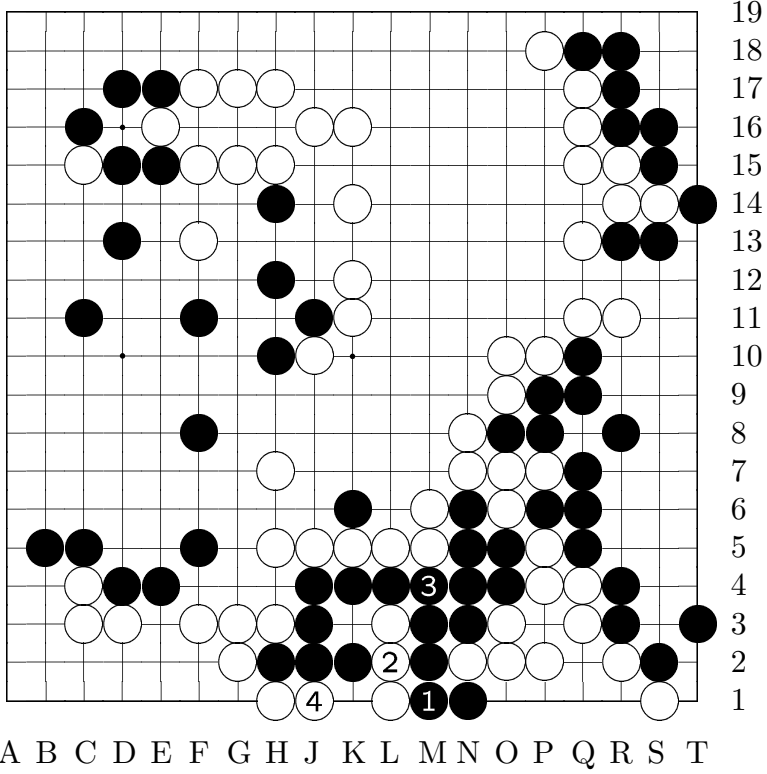


Diagram 5: 101-125

120: la place de 120, blanc peut tuer le groupe noir

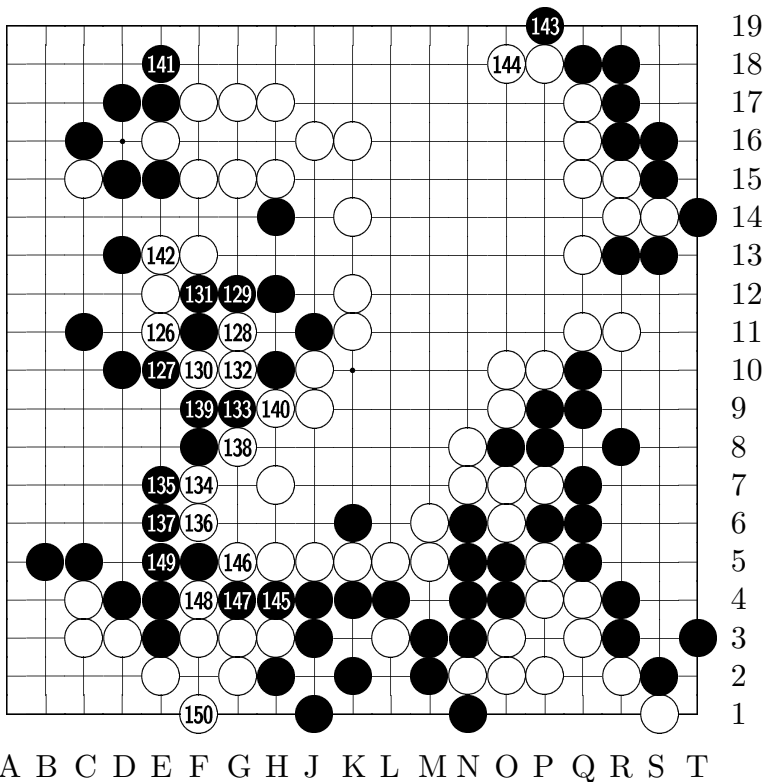


**Variation 1** at move 120 in  
Diagram 5: 1-4



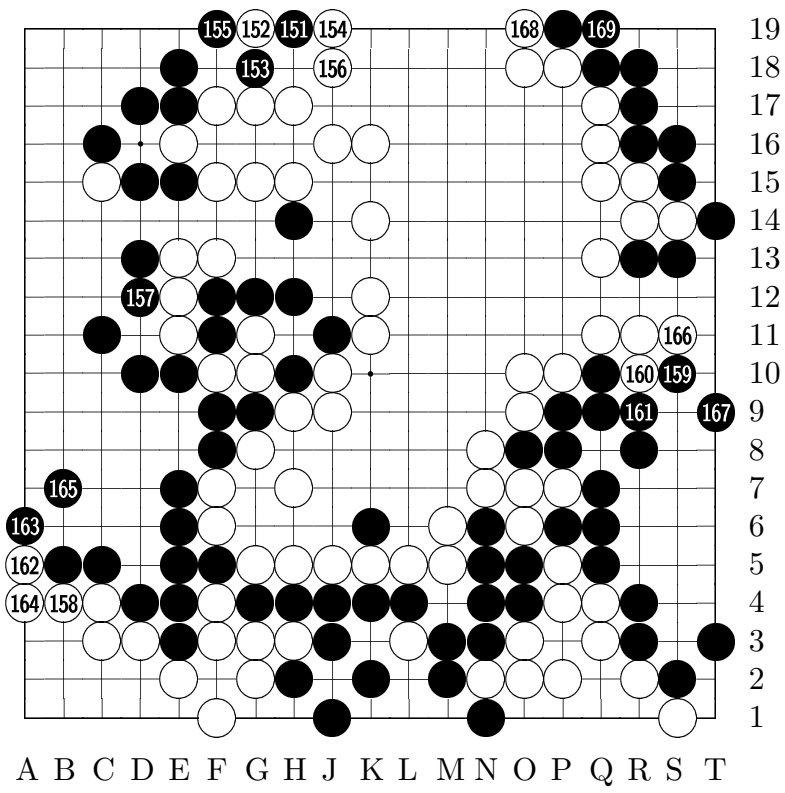
**Variation 1.1** at move 4 in  
Variation 1: 1-4

4: c'est mort :-)



**Diagram 6:** 126-150

150: en g!



**Diagram 7:** 151-169

169: Blanc gagne de 18,5 pts